



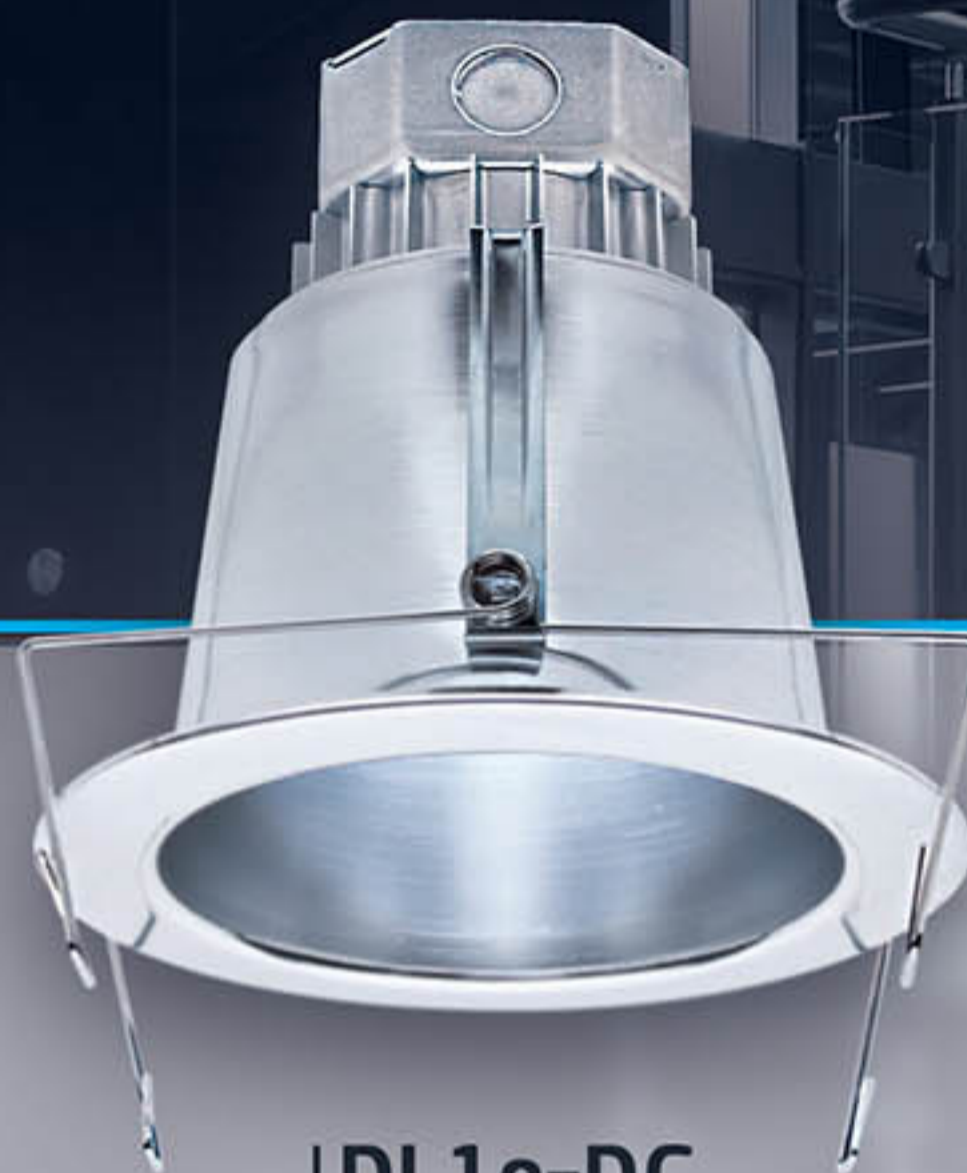
NEW DL1e-xC SERIES

~ 120V / 277V Self-Declared
10, 8 or 6 Watt field adjustable
0-10V dimming (option)

- > MODULAR DESIGN >
- > FAST INSTALATION >



DL1e-TC
100 deg beam



DL1e-DC
60 deg beam



The enLux DL1e-xC-120/277V LED Downlight is ideal for commercial retrofit and new construction as well as remodel/retrofit for residential homes.

DL1e-xC-120/277V is a voltage self-declared luminaire; when the incoming power is 120Vac, it will self-declare as a 120Vac driving circuit which results it can be paired with a 120Vac phase cut dimmer, as well as if the incoming is 277Vac, it will self-declare as a 277Vac luminaire and can be paired with a 277Vac phase cut dimmer. **DL1e-xC** has an additional unique feature that the operating power can be adjusted in the field to 10, 8 or 6 watts by setting the dip switch located inside the junction box. It also comes with an optional 0-10V dimming.

enLux Logistic – Ship direct to jobsite



NEW DL1e-xC SERIES



Features:

- 120/277Vac voltage self-declared & dimmable
- 10, 8, or 6 Watts, field adjustable
- DC Trim - 60 deg beam
- TC Trim - 100 deg beam
- CRI >80
- 820 - 1100 Lumens @ 10 Watts (depending on CCT & Trim Type)
- 6 White Tones - 2700K / 3000K / 3500K / 4000K / 4500K / 5000K
- IC Rated
- 4 TC Trim sizes to fit 5", 6", 8" and 9" TC5, TC6, TC8 & TC9 respective
- 2 DC Trim sizes to fit 6" or 8" ceiling hole. DC6, or DC8 respective
- Dry or Damp locations (request sealed lens when placing order)
- 0-10V dimming (option)

Benefits:

- 5-Year Warranty 50,000 hour life
- Lightweight - Easy to install with patented M Spring
- Efficient architecture design
- Energy auditing efficient - no need to investigate the line voltage
- Flexibility on light output - meeting customer preference at site
- ENERGY STAR certified for Commercial and Residential use.

Selections of Trims & Surface Texture:

