

Trim color options

- |                |                |
|----------------|----------------|
|                |                |
| White          | Black          |
|                |                |
| Chrome         | Aged Copper    |
|                |                |
| Clear Anodized | Black Anodized |

Line Voltage

120Vac or 277Vac line voltage self-selected

**DL2e-PC**

Junction Box\*, IC Rated

180 degree beam

Phase Cut Dimmable, 0-10V Dimming option

42 watts standard (de-rated wattage available)

**50,000 hour rated life**

**5 Year Warranty**

**Suitable for Dry or Damp Location**

When ordering for damp location, request the lens to be O-ring sealed.

**Operating Temperatures:**

-40°F to 106°F  
-40°C to 40°C

White	CCT	CRI	Input Power (W)	Useful Lumen (120V/277V)	Eff (lm/w) (120V/277V)	Power Factor (120V/277V)
Cool	4000K	83	42	5089 / 5184	119.2 / 123.5	99 / 96
Daylight	5000K	82	42	5040 / 5094	119.4 / 123.3	99 / 95

4000K	Standard Frosted Lens	
Input Power (W)	Useful Lumen	Eff (lm/w)
42	5184	123.5
38	4753	125.8
34	4309	127.6

**Mounting:**

Standard shown in photo  
Custom mounting by request

**Application:**

Commercial & Residential

**Weight: 4.5 lbs**

**Performance:**

The **DL2e-PC Down Light** is powered by a **MCOB** (Multi-Chip-On-Board) light engine. enLux's proprietary thermal management enables the LED emitter to operate at the lowest possible junction temperature which ensures long life and excellent efficacy. A unique **Osram Duris E5** LED emitter is employed for the production of the engine.

The enLux **DL2e-PC Down Light** aluminum housing is finished in an ultra-durable top coat, safe, cool-to-the-touch, 100% recyclable (no mercury or hazardous materials)\*\*.

\*California Title 24 compliant, \*\*California Title 22 compliant

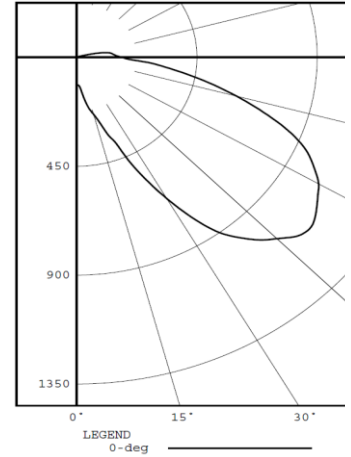




**DL2e-PC-42W Down Light Photometrics**

0 ft	Illuminances Distribution Ratio					
3 ft				0.029	0.268	1.000
6 ft			0.019	0.067	0.231	0.250
9 ft	0.006	0.012	0.030	0.073	0.122	0.111
12 ft	0.008	0.017	0.033	0.058	0.069	0.063
15 ft	0.011	0.019	0.031	0.042	0.043	0.040
	15 ft	12 ft	9 ft	6 ft	3 ft	CL

**Candle Power Distribution**



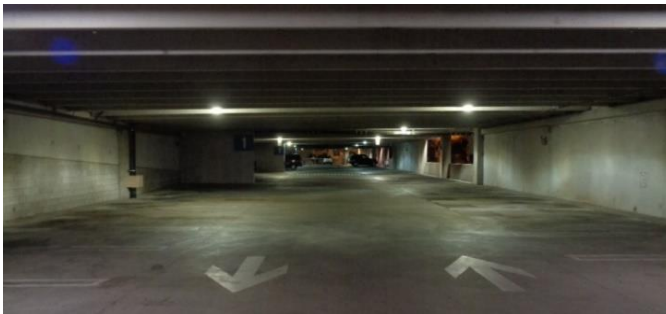
Product code	Color CCT	Input Power	Voltage	Trim Type/ Configuration	Trim Color
<b>8</b>	<b>64</b> 4000K	<b>3</b> 42W	<b>0</b> 120V/277V	<b>7</b> PC Light Module only	<b>WF</b> White (flat paint)
	<b>65</b> 5000K	(De-rated wattage available)	Self-Selected	<b>8</b> PC Light Module+ 16" Trim	<b>BF</b> Black (flat paint)
			<b>1</b> 0-10V Dimming		<b>CA</b> Clear Anodized <b>BA</b> Black Anodized

**Examples**

<b>864307-WF</b>	DL2e-PC Down Light	4000K	42W	120V/277V	PC Light Module only	W/O Trim
<b>865318-CA</b>	DL2e-PC Down Light	5000K	42W	120V/277V	PC Light Module+ 16" Trim	Clear Anodized Trim

**Parking Garage Project**

Before enLux DL2e-PC



After enLux DL2e-PC

